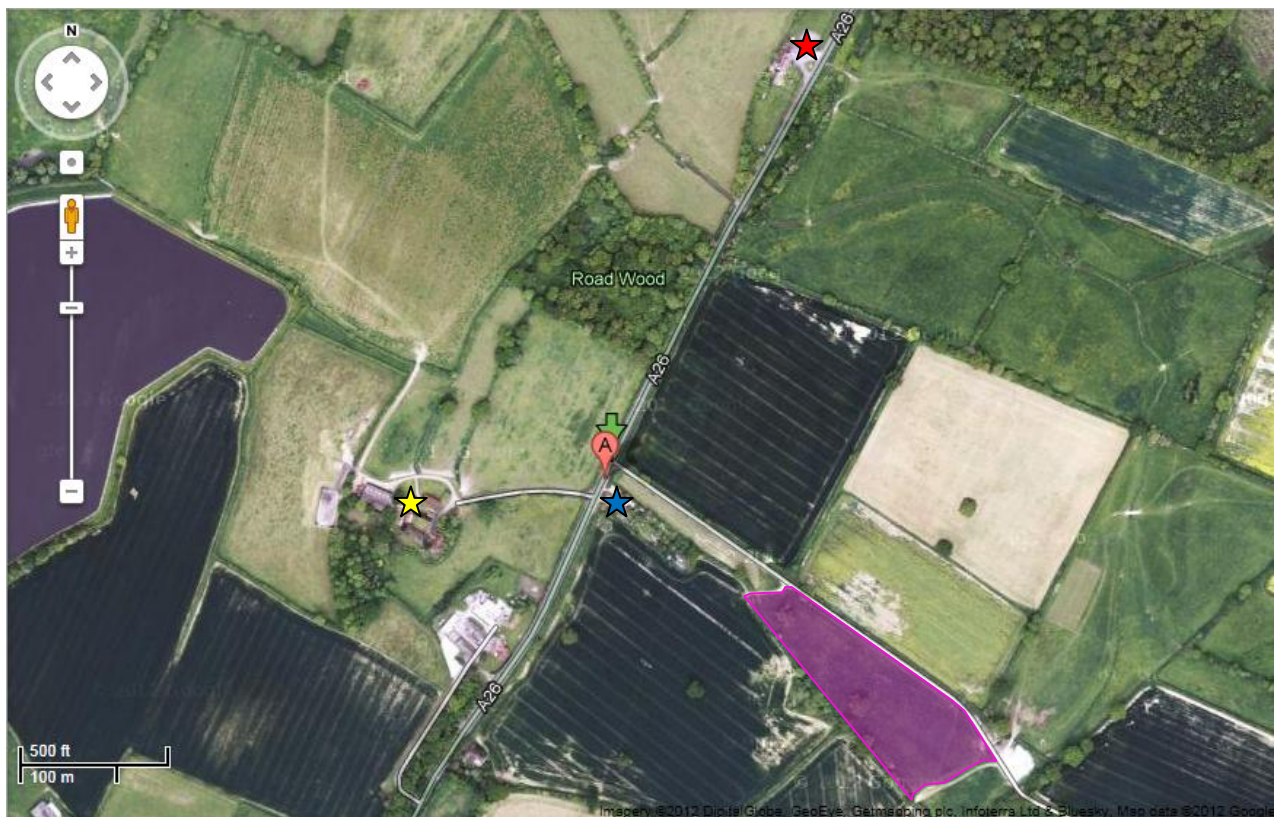


Summer Bash Location - The pink field

★ = The Old Ship Inn

★ = Clayhill Farm

★ = Clayhill Cottages



Location: Clayhill approx 3 miles from Cuilfail tunnel in Lewes, along A26

Coordinates to the turning at point A: 50.916712,0.057871

Post Code: BN8 5SJ (this belongs to the farmhouse further up the track)

Directions from Lewes: From the Cuilfail tunnel roundabout, take the second exit towards Ringmer. Go past Earwig corner, staying on A26, past Wellingham Lane herb gardens on the left, past the second turn off to Ringmer on the right, past the signs to the Cock Inn, past the United service station, then Upper Clay Hill Farm is on you left, and just opposite this are some cottages called Upper Clay Hill Cottages, with a farm track running beside (after) them. This is the track to the field. If you get to the Old Ship Pub you have gone too far.